

# Internet 2.0 とは ~ 共有したいこと ~



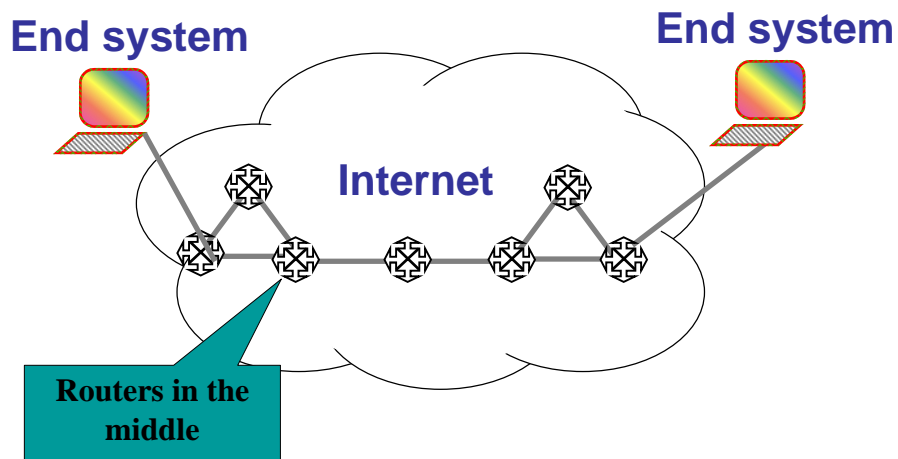
東京大学 大学院 情報理工学系研究科  
 JPNIC 副理事長  
 江崎 浩 <hiroshi@wide.ad.jp>



## Where the Internet will go ? -- past, now and future --

Decade	1990s	2000s	2010s
<b>Architecture</b>	<b>IP over PSTN</b>	<b>PSTN over IP</b>	<b>CDN over IP</b>
	C/S	P2P	???
<b>Application</b>	Fun	Business	???
	Cyber-space		Real-space
<b>Traffic</b>	Download	Symmetric	Upload
<b>Resource</b>	Local		Global
<b>First link</b>	Wired		Unwired
<b>Industry</b>	IT	ICT	???

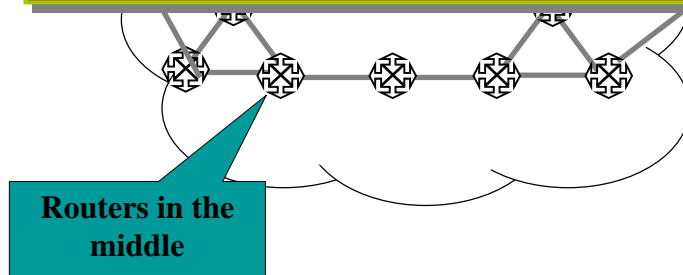
# Internet “end-to-end model”



# Internet “end-to-end model”

透明で自律的な情報“流通”の重要性  
転送/伝送 → 流通

(\* ) Mission of Internet2.0 ?



## Five Questions

1. Who is the stake-holder ?
2. Who own the resource ?
3. Who provide the resource ?
4. How come up with globe ?
5. How maintain the possibilities for new services ?